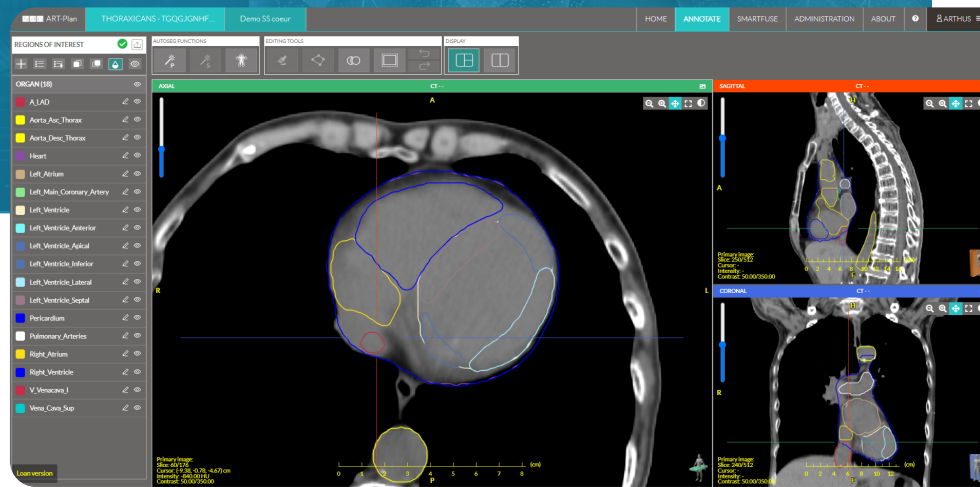


THERAPANACEA

# ART-Plan™

Modular. Intelligent. Trusted Worldwide.

Not just a single app. ART-Plan is an end-to-end AI software suite that is flexible and scalable across workflows – designed to deliver efficiency and clinical confidence with minimal disruption.



## Consistent Quality

ART-Plan delivers dependable, high-quality results through trusted AI, trained on extensively curated global data to ensure accuracy and confidence in every plan.



## Result-Focused

ART-Plan produces measurable ROI with a modular design. Choose only what you need today and scale as demands grow, with flexible options to fit your department.



## Proven Efficiency

ART-Plan provides fast, smart planning that reduces rework and clinician burden, enabling teams to work more efficiently without sacrificing safety or accuracy.



# ART-Plan™

AI Purpose Built for Providers.



*"ART-Plan reduced our planning time by 85% while improving plan quality. We can now offer adaptive radiotherapy to all patients who need it."*

– Sarah Johnson MD, Chief of Radiation Oncology, Memorial Cancer Institute



## Annotate

AI contours 200+ OARs and lymph nodes in minutes using clinically validated models.



## MR-Box

One-click MRI workflow with pseudo-CT generation and consistent HU values.



## SmartFuse

AI-powered 4DCT/CBCT fusion with real-time, accurate alignment—even in tough cases.



## AdaptBox

One-click adaptive CBCTs with OAR contours—reduces edits and supports efficient.



## SmartPlan

Delivers submillimeter, AI-optimized treatment plans in minutes across modalities.



## TumorBox

Contours tumors in seconds using AI trained for accuracy across multiple disease sites.

